



MONTHLY MEMBERSHIP PROGRESS REPORT

District 2 S3

Results as of: 10/31/2018

GMT: GREGORY GILLIAM

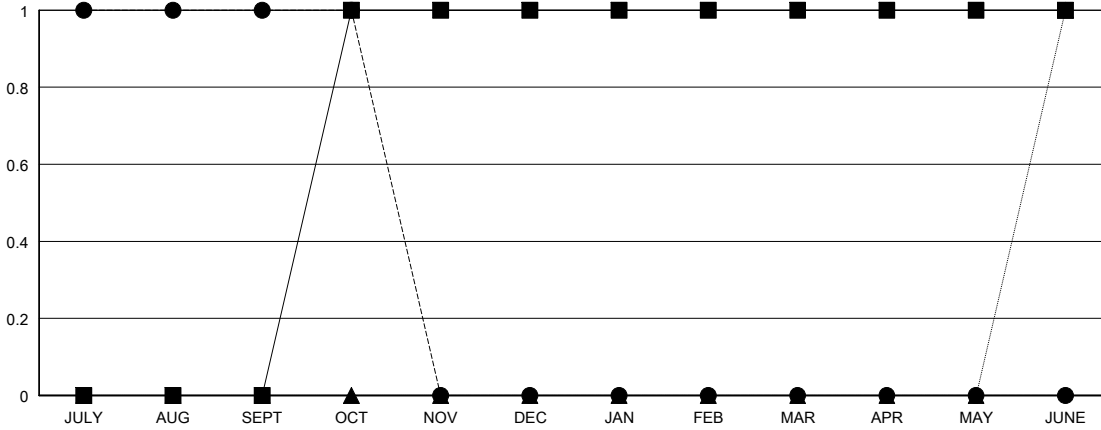
LOCATION TEXAS

GMT CA

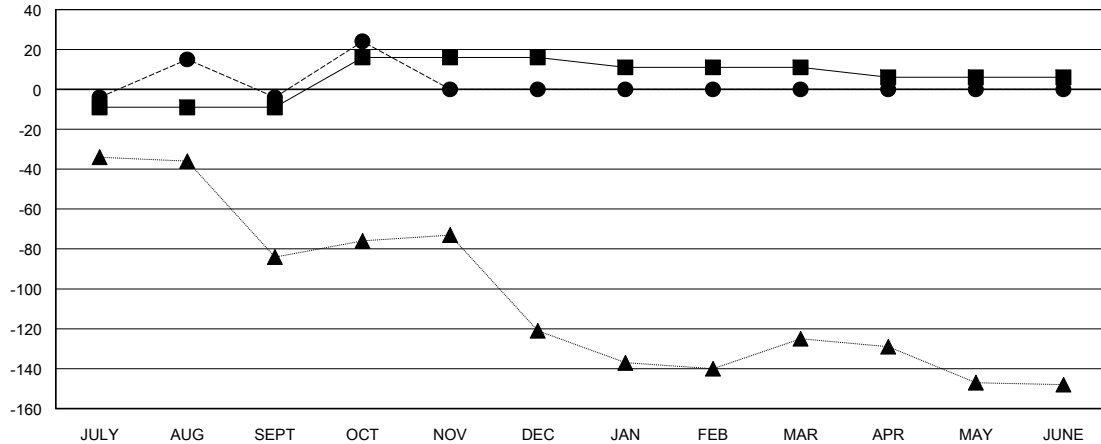
Clubs			
RESULTS FOR 2018-2019			
QUARTER	NEW CLUB GOAL	NEW CLUBS	DROPPED CLUBS
JULY/AUG/SEPT	0	1	0
OCT/NOV/DEC	1	0	0
JAN/FEB/MAR	0	0	0
APR/MAY/JUNE	0	0	0

Members			
RESULTS FOR 2018-2019			
QUARTER	MEMBER GROWTH NET GOAL	MEMBER GROWTH ACTUAL	DROPPED MEMBERS ACTUAL (including transfers)
JULY/AUG/SEPT	-9	98	92
OCT/NOV/DEC	25	58	28
JAN/FEB/MAR	-5	0	0
APR/MAY/JUNE	-5	0	0

GOALS AND ACTUAL NEW CLUBS CUMULATIVE



GOALS AND ACTUAL MEMBERS CUMULATIVE



DROPPED CLUBS: 0

25 CLUBS OF 52 ADDED 1 OR MORE NEW MEMBERS

GENDER DISTRIBUTION	
MALE	1,217 (63.99%)
FEMALE	685 (36.01%)
Women Percentage Fiscal Year Goal: 40%	

DROPPED MEMBERS	
DECEASED	8
CLUB CANCELLED	0
OTHER	112
TOTAL	120

[CLICK HERE FOR CUMULATIVE MEMBERSHIP DATA](#)

TOTAL FAMILY UNIT MEMBERS	328
FAMILY MEMBERS PAYING HALF DUES	166